

## Mechanical air flow switch

**F62**
*Air flow switch*

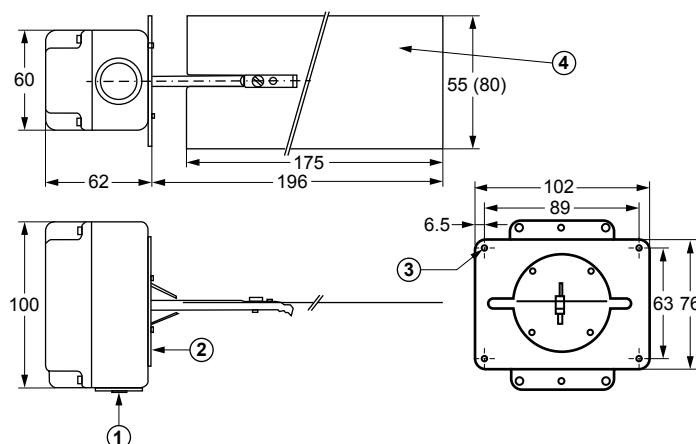
The F62 airflow switch detects air flow or the absence of air flow by responding only to the velocity of air movement within a duct. The control can be wired to open one circuit and close a second circuit (SPDT) for either signaling or interlock purposes.

Failure of air flow during normal operation of air handling systems may cause over-heating, coil icing and other conditions that may be detrimental to the equipment.

Typical applications include make-up air systems, air cooling or heating processes and exhaust systems.

### Features

- ▶ Polycarbonate IP43 enclosure
- ▶ Large wiring space
- ▶ Range screw easily accessible



### Dimensions in mm

- |   |  |
|---|--|
| 1 | Cable inlet hole $\varnothing$ 22.7 mm; Dust cup is installed                      |
| 2 | Mounting plate gasket 0.2 mm thick neoprene cell rubber                            |
| 3 | Four mounting holes $\varnothing$ 5 mm.  |
| 4 | One paddle 55 mm wide (mounted)<br>One paddle 80 mm wide (packed with the control) |

### Ordering information

#### IP43

Codes	Max. air velocity	Switch Action	Enclosure	Additional features
F62SA -9100	10 m/sec	SPDT Contacts 15(8) A, 230 V~	Plastic enclosure IP43	With 55 mm paddle mounted, 80 mm separate

#### Accessories

Codes	Description
PLT112-1R	F62 - Air flow plate 55 x 175 mm
PLT112-2R	F62 - Air flow plate 80 x 175 mm