

Mechanical liquid level switch

F63

Liquid level float switch

The F63 liquid level switch is designed to maintain a liquid level in indoor or outdoor closed tanks holding water, chlorinated water, ethylene glycol or other non-corrosive liquids.

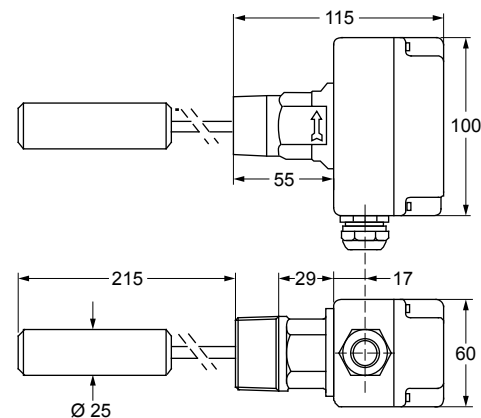
The switch has SPDT contacts and can be wired to close one circuit and open a second circuit when the liquid level rises above or falls below the required level.

The switch maintains the liquid level within (approx.) 13 mm.

The float switch should not be used for liquids lighter than water (density less than 0.95 kg/dm³).

Features

- ▶ Solid polycarbonate float
- ▶ Vapour tight IP67 enclosure
- ▶ Convenient wiring terminals



Dimensions in mm

Ordering information

Codes	Connection	Switch action	Enclosure	Additional features
F63BT-9102	1-1½ NPT	SPDT Contacts 15(8) A, 230 V~	Plastic enclosure IP67	Plastic float, VITON diaphragm

Accessories

Codes	Description
FLT001N001R	F63 - Float