



Pressure actuated water valves

V48

3-way pressure actuated water valves

These watervalves are especially designed for condensing units cooled either by atmospheric or forced draft cooling towers. They may be used on single, or multiple condenser hook-ups to the tower.

The type V48 valve senses the compressor head pressure and allows cooling water to flow to the condenser, to by-pass the condenser, or to allow waterflow to both condenser and by-pass line in order to maintain correct refrigerant head pressure.

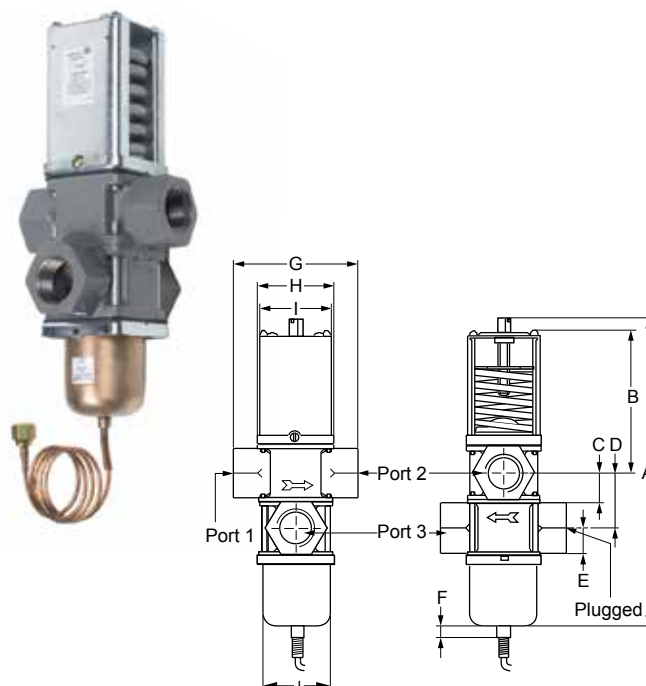
A further advantage of this system is that the 3-way valve permits a continuous water flow to the tower so the tower can operate efficiently with a minimum of maintenance on nozzles and wetting surfaces.

The valves can be used in non-corrosive refrigerant systems.

Ammonia power elements and valves designed for salt-water applications are available. The valves have a quick opening characteristic.

Features

- ▶ Pressure balanced design
- ▶ Free movement of all parts
- ▶ Easy manual flushing
- ▶ High Kv values
- ▶ Pressure actuated
- ▶ Can be used as mixing or diverting valve



Dimensions in mm

Valve size	A	B	C	D	E	F	G	H	I	J
Commercial type										
1/2"	201	86	24	38	29	8	81	51	47	45
3/4"	218	96	27	45	35		86	55	52	48
1"	296	138	29	51	48		124	71	67	59
1¼"	315	144	32	60	57		126			59
Maritime type										
3/4"	218	96	27	45	35	8	86	55	52	48

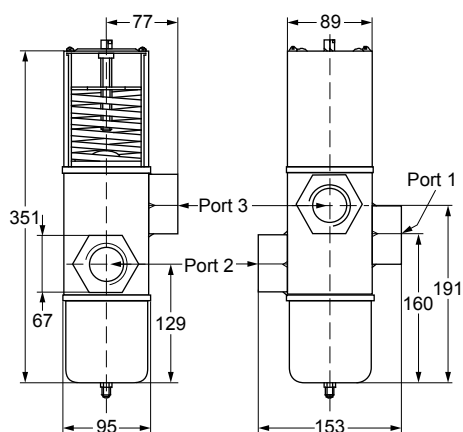
Ordering information

Codes	Range (bar)	Body style	Size thread	Style	Capillary length	Additional features It is possible to change Style 13 into Style 45A by ordering KIT031N600
Commercial type						
V48AB -9510	4...20	Straight	1/2" according to ISO 7-Rc	50	75	---
V48AB -9600	4...16			13		
V48AC -9510	4...20		3/4" according to ISO 7-Rc	50		
V48AC -9600	4...16			13		
V48AD -9510	6...20		1" according to ISO 7-Rc	50		Bodies in line (port 3 below port 2)
V48AD -9600	4...16			13		
V48AD -9602	4...16		1¼ " according to ISO 7-Rc	50		---
V48AE -9510	6...20					
V48AE -9600	4...16					
Maritime types						
V48BC -9600	4...16	Straight	3/4" according to ISO 228	13	75	Seawater resistant

Pressure actuated water valves

V48

V48AF commercial type



Ordering information

Code	Range (bar)	Body style	Size thread according to ISO 7-Rc	Style	Additional features It is possible to change style 13 into style 45A by ordering KIT031N600
V48AF-9300	6...14	Straight	1 1/2"	5	---